



GAT MONTHLY MEMBERSHIP PROGRESS REPORT

Results as of: 6/30/2024

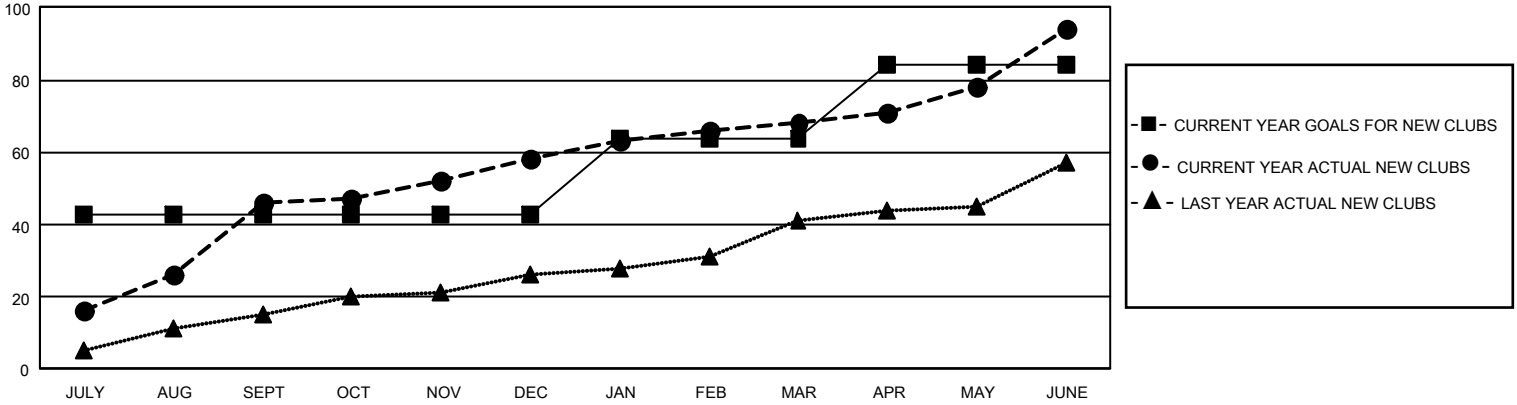
GMT Constitutional Area 6 - I, Group F

REPORT DOES NOT INCLUDE CLUBS IN UNDISTRICTED AREAS.

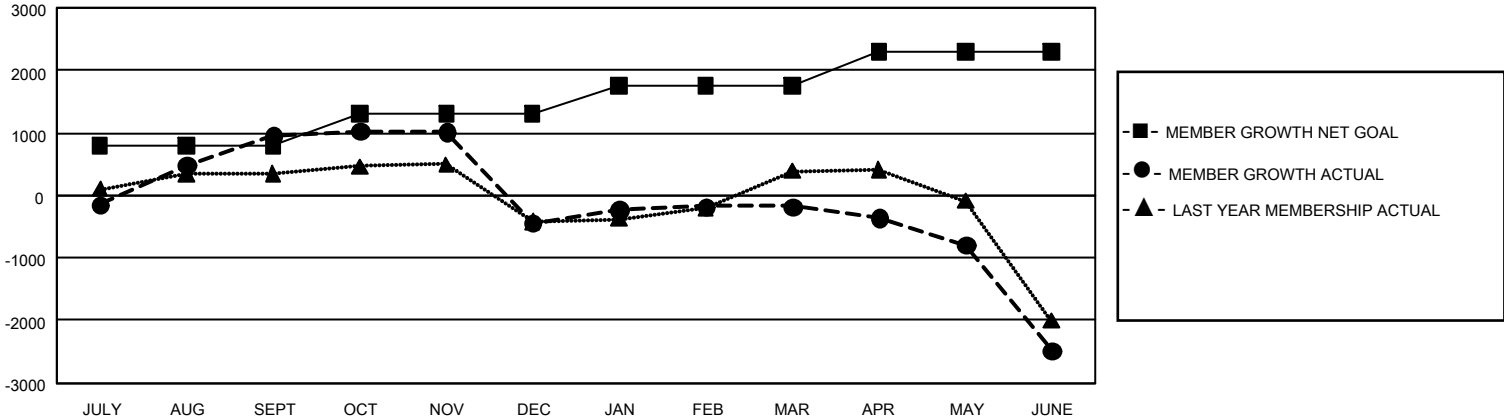
Clubs			
RESULTS FOR 2023-2024			
QUARTER	NEW CLUB GOAL	NEW CLUBS	DROPPED CLUBS
JULY/AUG/SEPT	129	46	9
OCT/NOV/DEC	0	12	32
JAN/FEB/MAR	63	10	12
APR/MAY/JUNE	60	26	8

Members			
RESULTS FOR 2023-2024			
QUARTER	MEMBER GROWTH NET GOAL	MEMBER GROWTH ACTUAL	DROPPED MEMBERS ACTUAL (including transfers)
JULY/AUG/SEPT	790	2,914	1,565
OCT/NOV/DEC	515	1,227	2,484
JAN/FEB/MAR	442	1,083	643
APR/MAY/JUNE	545	2,100	3,903

GOALS AND ACTUAL NEW CLUBS CUMULATIVE



GOALS AND ACTUAL MEMBERS CUMULATIVE



DROPPED CLUBS: 61	754 CLUBS OF 1,226 ADDED 1 OR MORE NEW MEMBERS	GENDER DISTRIBUTION	
		MALE 21,406 (72.10%) FEMALE 8,271 (27.86%) NON BINARY 0 (0.00%) PREFER NOT TO ANSWER 13 (0.04%)	
DROPPED MEMBERS		CLICK HERE FOR CUMULATIVE MEMBERSHIP DATA	TOTAL FAMILY UNIT MEMBERS 13,474
DECEASED 129 CLUB CANCELLED 813 OTHER 7,636 TOTAL 8,578			FAMILY MEMBERS PAYING HALF DUES 8,082